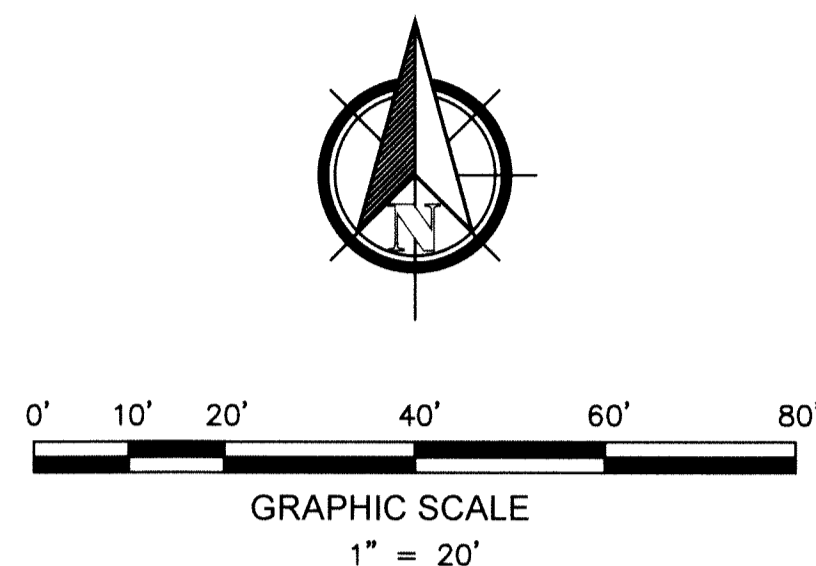


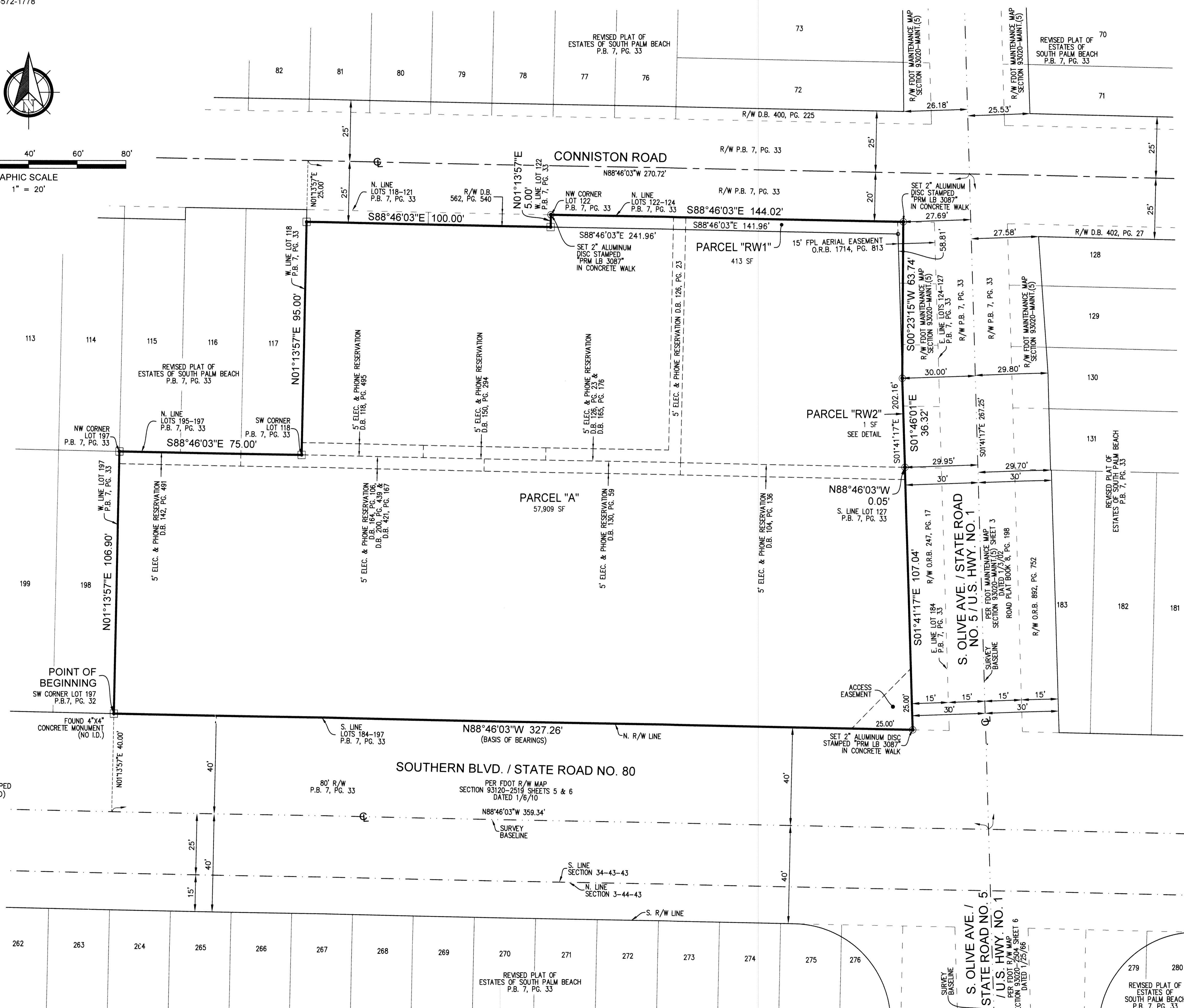
THIS INSTRUMENT WAS PREPARED BY
DONNA C. WEST OF
PULICE LAND SURVEYORS, INC.
CERTIFICATE OF AUTHORIZATION NO. LB3870
5381 NOB HILL ROAD
SUNRISE, FLORIDA 33351
954-572-1777 FAX 954-572-1778

7-ELEVEN SOUTHERN

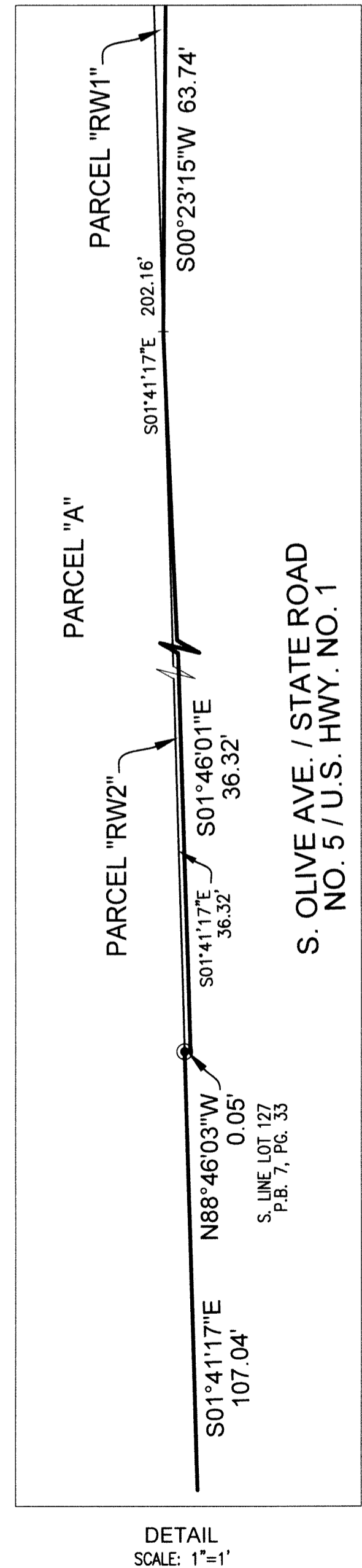
A REPLAT OF LOTS 122, 123, & 186-197 AND PORTIONS OF LOTS 118-121, 124-127, 184 & 185, "REVISED PLAT OF ESTATES OF SOUTH PALM BEACH", AS RECORDED IN PLAT BOOK 7, PAGE 33, PUBLIC RECORDS OF PALM BEACH COUNTY, FLORIDA, IN SECTION 34, TOWNSHIP 43 SOUTH, RANGE 43 EAST, CITY OF WEST PALM BEACH, PALM BEACH COUNTY, FLORIDA



60
SHEET 2 OF 2 SHEETS



- LEGEND & ABBREVIATIONS:**
- = SET PERMANENT REFERENCE MONUMENT
4"x4"x24" CONCRETE MONUMENT WITH 2" ALUMINUM DISK STAMPED "PRM LB 3870" (UNLESS OTHERWISE NOTED)
 - = SET PERMANENT REFERENCE MONUMENT
MAG NAIL WITH 1.2" BRASS WASHER STAMPED "PRM LB 3870" (UNLESS OTHERWISE NOTED)
 - = SET MAG NAIL WITH 1.2" BRASS WASHER STAMPED "LB 3870"
 - CL = CENTERLINE
 - D.B. = DEED BOOK
 - ELEC. = ELECTRIC
 - FDOT = FLORIDA DEPARTMENT OF TRANSPORTATION
 - FPL = FLORIDA POWER & LIGHT COMPANY
 - I.D. = IDENTIFICATION
 - LB = LICENSED BUSINESS
 - O.R.B. = OFFICIAL RECORDS BOOK
 - P.B. = PLAT BOOK
 - PG. = PAGE
 - R/W = RIGHT-OF-WAY
 - SF = SQUARE FEET
 - U.E. = UTILITY EASEMENT



DETAIL SCALE: 1"=1'